



SCV VALVE
Innovative Valve Solutions®

A Global Leader in Industrial Valve Manufacturing

API 6A

- Thru Conduit Slab & Expanding Gates
- 3 - Piece Trunnion Mounted Balls

API 6D

- Thru Conduit Slab & Expanding Gates
- 3 - Piece Trunnion Mounted Balls
- Full Port Swing Checks
- Piston Checks
- Pressure Balanced Lubricated Plugs

API 594

- Dual Plate Checks - Wafer & Flanged

API 600

- Wedge Gates

API 623

- Globes

ANSI B16.34

- 1 & 2 - Piece Flanged Floating Balls



Company Profile

Over past several decades, SCV Valve has become one of the most well-respected and trusted brands in the marketplace built on a foundation of consistent performance with an unwavering commitment to quality.

SCV Valve takes sincere pride in our ability to manufacture both commodity and specialty valves with timely delivery capabilities and competitive prices. Industries served include the power, paper and pulp, oil and gas, and petrochemical sectors. All sizes, pressure classes, and metallurgical compositions are managed in house utilizing the strictest quality control measures to ensure the customer's total satisfaction.

SCV Valve products include thru conduit gates, wedge gates, globes, full port swing checks, piston checks, trunnion mounted balls, floating balls, and lubricated plugs. Valves utilized throughout the industry must meet rigorous quality and production standards. SCV Valve has earned its API 6A, API 6D, ISO: 9001, CE-PED, and CRN certifications while operating under the API Q1 Quality Management System.



Thru Conduit Gate casting inventory stage for assembly



Inventory warehouse



8" 600 Thru Conduit Expanding Gate Valves completed hydro testing

API 600 Wedge Gate Valves

API 6D Thru Conduit Gate Valves Expanding & Slab Gate Designs

API 623 Globe Valves

API 6D Trunnion Ball Valves

API 594 Dual Plate Check Valves Wafer & Lug Designs

API 6D Swing Check Valves

API 6A Trunnion Ball Valves

API 6D Piston Check Valves

API 6D Pressure Balanced Lubricated Plug Valves

ANSI B16.34 Floating Ball Valves



Texas Operations facility



24" 1500 Trunnion Mounted Ball Valve



24" 600 Thru Conduit Valve body

FACILITY

SCV Valve is located about halfway between Houston and Galveston, TX. 43 employees operate our Domestic and International Sales, Engineering, Design, Project Management, Quality, Manufacturing, and Marketing departments.

SCV Valve has a new (Phase 1) 25,000 sq. ft. state-of-the-art Large Bore Valve Manufacturing expansion that was completed in 2016. This has increased the assembly area for 20" thru 48" size valves and provides additional square footage for testing, painting, final inspection and shipping. The new expansion includes two full-span bridge cranes with a combined 80,000 pounds of lifting capacity, allowing SCV Valve to increase efficiency.

The (Phase 2) 15,000 sq. ft. Shipping, Receiving & Finished Goods Warehousing expansion in was completed by Summer 2017. This has increased the ability to load and unload shipping containers much safer and more efficiently. The new expansion includes 2 loading docks, finished goods storage and a full-span bridge crane with 10 tons of lifting capacity.

The (Phase 3) 20,000 sq. ft. Finished Goods Warehouse was completed in late Spring 2018.

SCV Valve

This addition has greatly increase our on-site dry storage capability for our ready-to-ship inventory. The new expansion also includes two full-span bridge cranes with a combined 20-tons of lifting capacity, allowing SCV Valve to increase efficiency.

PRODUCTS

SCV's most popular products include our API 6D line for the midstream market. These products include Trunnion Mounted Ball, Thru Conduit Gate (expanding and slab designs), Full Port Swing Check, Piston Checks, and Lubricated Plug valves. In addition to the midstream market we also manufacture valves to meet the upstream, downstream, and power market demands. SCV maintains a large ready-to-ship inventory which caters to all three markets and includes one of the largest high pressure valve inventories in the US.

Our complete inventory consists of a combination of commodity valves, specialty valves and valves that are uncommon in size, pressure class, trim and body materials for servicing the upstream and downstream markets from wellhead assemblies to petrochemical, refining, industrial, and power markets. Our standard commodity stock items consist of midstream API 6D products such as Thru Conduit Gate (expanding and

slab designs), Trunnion Mounted Ball, Piston and Full Port Swing Check, and Lubricated Pressure Balanced Plug valves in carbon and stainless steel bodies with ENP and stainless trims and a variety of sealing materials to meet all customers service requirements. The API6D products are available in sizes 2" thru 48", class 150 thru 2500.

SCV stocks common and hard-to-find API 600 downstream products including Bolted Bonnet OS&Y Wedge Gate, Globe, and Check valves in carbon and stainless steel with various trims and sealing materials in sizes 2" thru 48", class 150 thru 2500. Our inventory of Pressure Seal products include Gate, Globe, and Check valves in WCB, C6, C9, C12, C12A and stainless steel in 2" thru 24", class 900 thru 2500. Regarding specialty valves, many customers come to us needing an engineered solution for a specific application. SCV is one of the few manufacturers that will build a oneoff valve for a customer. These highly specialized valves are fewer in quantity, and require intensive engineering as well as more manufacturing time. Specialty items include API 6A Gate valves ranging from 7-1/16", 9", 11", 13-5/8", 16-3/4" 3000 and 5000 Through Conduit Gate (slab and expanding); 12" 400# TCG for Geothermal service; Double Ball valves in sizes up through 16"; API 6D Single Ball in sizes 22", 26", 28" and 32"; and API 6A 2-1/16" 10,000 Ball valves.

CERTIFICATIONS

Both SCV facilities have acquired their own API 6A and API 6D monograms, CE PED certification, ISO 9001:2015 certification, Canadian Registration Numbers (CRN) and implemented an API Q1 Quality Management System.

IMPROVEMENTS

SCV utilizes Quickbase, a company-wide web based business management system for real-time oversight of all activities performed throughout the organization. Our web based quality system allows procedures and work instructions readily available to personnel on the production floor for effective monitoring

of all production aspects while making all facets of our business function efficiently. Whether its production, receiving, inventory control, or engineering management - all the departments are tied to these programs providing quick access to all necessary information.

to-ship inventory allows for quick deliveries. We focus on maintaining our large inventory through extending the distribution network. Currently, we have some strategically located warehouses to quickly react to the needs of key areas throughout the US.

SCV maintains a wide range of ready-to-ship inventory!



Assembly of an API 6A 16-3/4", 5,000 PSI Thru Conduit Gate Valve

THE DIFFERENCE

SCV products are USA engineered and designed. Our customer service and superior quality sets us apart from others. Our ready-

QUALITY

Upon completion of our vendor qualification auditing process and closure of action items, SCV's management strategizes on a proper



Palletted 7-1/16" 5000 PSI Thru Conduit Gate Valves ready for shipping



Welding flange to yoke tube



Machining 18" 600 Thru Conduit Gate Valve body



Measuring yoke tube assembly



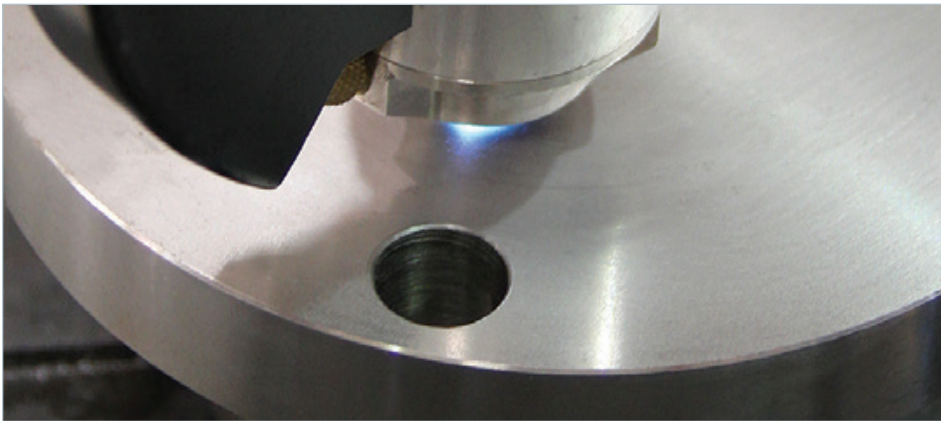
Installing packing into Thru Conduit Gate Valve



Riveting identification tag on Full Port Swing Check Valve



Stainless steel Trunnion Ball Valve components at Texas Operations facility



Testing metal composition with PMI gun

vendor oversight plan intended to maintain the most demanding levels of quality and performance at all facets of production. From the birth of the steel until shipment of the final product, traceability and certification from foundries and mills is maintained. Rigorous inspections take place throughout the manufacturing cycle to guarantee quality.

All castings and forgings for API 6D products are being produced up to API 6D Quality Specification Level [QSL] 3 requirements which require stringent non-destructive testing.

SCV's extensive NDE consist of 100% WET MAG on every casting and 10% random X-ray of each casting heat. Upon completion of a finished valve, our quality team prepares all documentation by heat and serial number for job book completion. Certificates ranging from foundry MTRs to bolting certifications and elastomer batch reports are maintained.

FIELD SERVICE

SCV offers a field service division equipped with a team of highly trained and well qualified

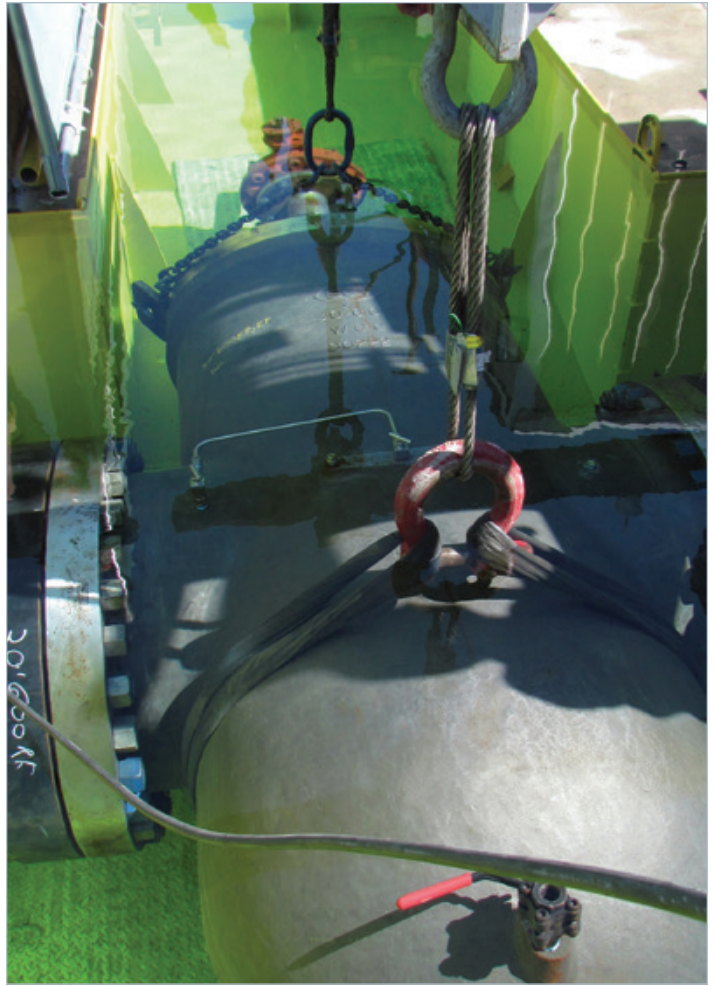
personnel that are ready to tackle anything that comes their way. SCV technicians are available 24/7 in order to provide a wide variety of services worldwide, including: on site supervision during commissioning and start up, field inspection, as well as maintenance and valve modifications. Additional services include valve installation oversight and training for operations personnel, preventive maintenance programs, and technical support.

SUMMATION

SCV controls quality at every level of the product realization process from procurement of the raw material to final hydro testing. Whether the steel is from the U.S. or Korea, SCV has its own inspectors on site at foundries and mills to check the steel. Positive Material Identification is performed to verify chemical acceptance. In addition, 100% magnetic particle and 10% random radiography examination takes place on all casting heats to verify sound quality at the surface and subsurface of SCV's steel. While SCV regularly performs standard metallurgical tests, customers may request ultrasonic or x-ray examinations. SCV has Level 2 inspectors

who can perform penetrant and visual exams to detect and evaluate any discontinuities and analyze materials. As a standard, SCV performs hydro tests on every valve manufactured to ensure that full compliance with applicable API codes and standards are maintained. In addition to Hydro testing SCV has the capacity to offer high pressure nitrogen tests, submerged nitrogen tests, & Fugitive emission testing.

Additionally, SCV successfully passed the testing to meet Shell TAT Specification MESC SPE 77/300 for API 6D Thru Conduit Expanding Gates & Slab Gates - Sizes: 20" thru 36" - Class: #150, #300, & #600. ■



High pressure submerged Nitrogen test on 30" 600 Thru Conduit Gate Valve



Thru Conduit Expanding Gate Valve assembly



26" 600 Thru Conduit Expanding Gate Valves



30" 600 Thru Conduit Expanding Gate Valves



Shell TAT test on 24" 600 Thru Conduit Expanding Gate Valve

Certifications & Registrations

American Petroleum Institute (API)

API 6A Certification



API 6D Certification



ISO 9001:2015 Certificate



CE PED Certificate



Canadian Registration Number

- Alberta
- OC07063.2
- New Brunswick
- OC07063.27
- Northwest Territory
- OC07063.25
- Nunavut
- OC07063.2N
- Ontario
- OC07063.25
- Yukon
- OC07063.2
- British Columbia
- OC07063.21
- New Foundland & Labrador
- OC07063.20
- Novascotia
- OC07063.27
- Manitoba
- OC07063.24
- Prince Edward Island
- OC07063.29

Facilities

SALES, ENGINEERING, PROJECTS, MANUFACTURING, & WAREHOUSING

- Manufacturing & Warehouse: 88,225 SF
- Office: 9,600 SF
- Shipping: Qty. 2 Loading Docks & Qty. 4 Street Level Loading

PHASE 1 - Large Bore Manufacturing

SCV Valve broke ground on the 25,000 sq. ft. state-of-the-art Large Bore Valve Manufacturing expansion in 2015 and was completed in 2016. This has increased the assembly area for 20"- 48" size valves and provides additional square footage for testing, painting, final inspection and shipping. The new expansion includes two full-span bridge cranes with a combined 80,000 pounds of lifting capacity, allowing SCV Valve to increase efficiency.

PHASE 2 - Shipping, Receiving & Finished Goods Warehousing

SCV Valve broke ground on the 15,000 sq. ft. Shipping, Receiving & Finished Goods Warehousing expansion in early 2017 and was completed by Summer 2017. This has increased the ability to load and unload shipping containers much safer and more efficiently. The new expansion includes 2 loading docks, finished goods storage and a full-span bridge crane with 10 tons of lifting capacity.

PHASE 3 - Finished Goods Warehousing

SCV Valve broke ground on the 20,000 sq. ft. Finished Goods Warehouse was completed in late Spring 2018. This addition has greatly increase our on-site dry storage capability for our ready-to-ship inventory. The new expansion also includes two full-span bridge cranes with a combined 20-tons of lifting capacity, allowing SCV Valve to increase efficiency.



Partial Project List

CUSTOMER	PROJECT NAME	PRODUCTS SUPPLIED
· CHEVRON (USA)	Sour Creek	26" 900 Ball Valves
· CITGO (USA)	WP Coke Drum	30" 150 x 300 Gate Valves
· CONOCO PHILLIPS (USA)	Cob Borger	12" 300 Ball Valves - Metal Seated
· HALLIBURTON (Brazil)	FPSO P-48	Duplex Globe Valves
· PETROBEL (Egypt)	El Gamil Phase 1 - ELPG 50	2" - 10" 150 - 600 Gate, Globe & Check Valves 20", 26", 28" & 32" 600 - 900 Ball Valves
· PETROBEL (Egypt)	El Gamil - RPP On Shore	2" - 10" 150 - 600 Gate, Globe & Check Valves 20", 26", 28" & 32" 600 - 900 Ball Valves
· ENPPI (Egypt)	Tuna Field - Tuna Platform [Mediterranean Sea]	24" 900 Ball Valves with Single Acting Piston Actuator
· EOG Resources	Peeler Sour Gas Project [Atascosa County, TX - Eagle Ford]	8" 150#, 16" 300#, 24" 300# Trunnion Ball Valves, 12" 300# Swing Checks
· EOG Resources	Titan Hub [Fowlerton, TX - Eagle Ford]	4" & 8" 600# Trunnion Ball Valves, 6" 600# Piston Checks, 2" 300#, 2" & 4" 600# Globe Valves
· XTO Energy (USA)	Means Field Expansion [Andrews, TX - Permian Basin]	4", 6" & 8" 900# Full Stainless Trunnion Ball Valves 6" & 8" 900# Full Stainless Dual Plate Wafer Checks
· ETC (USA)	Eagle-Ford	31 - 20" 600 Thru Conduit Gate Valves - Expanding 14 - 12" 600 Thru Conduit Gate Valves - Expanding 21 - 10" 600 Thru Conduit Gate Valves - Expanding 39 - 8" 600 Thru Conduit Gate Valves - Expanding 26 - 6" 600 Thru Conduit Gate Valves - Expanding
· TOTAL (France)	Yemen LNG - Marib Block 18 [Yemen]	3" - 20" 150 - 2500 A350 LF2 Ball Valves 12" - 24" 1500 A182 F316 Cryogenic Ball Valves
· KENYA PIPELINE COMPANY (Kenya)	Line 1 Capacity Enhancement [Mombassa, Kenya]	2" - 24" 600 Slab Gate Valves with Electric Act. 2" - 18" 150 Ball Valves with Electric Act. 2" - 14" 900 Swing Check Valves
· PETROBRAS (Netherlands)	FSTP P-51, P-52, P-54, P-55 [Brazil]	2" - 12" 600 - 1500 Gate, Globe & Check F-51 Duplex Valves
· MARATHON OIL (USA)	Train 1 LNG Project [Equatorial Guinea]	2" - 16" 900 F-51 Duplex Ball Valves 2" - 16" 900 F-51 Duplex Swing Check Valves 2" - 6" 900 F-51 Duplex Globe Valves
· PETROJET (Egypt)	Tobruk - Sareer Pipeline [Northern Africa]	34" 600 Slab Gate Valve with Electric Actuation
· ENTERPRISE PRODUCTS (USA)	Meeker 1 and 2 Replacement [Colorado, USA]	2" - 24" 300 - 900 API 6D Ball Valves 2" - 24" 300 - 900 API 6D Gate Valves
· ANADARKO (USA)	Powder River Project [Wyoming, USA]	6" - 24" 300 - 900 API 6D Ball Valves 12" - 24" 300 - 900 API 6D Gate Valves
· EXXON MOBIL (USA)	CFZ Project	2" - 12" 900 Gate, Check, & Globe Valves
· EXXON MOBIL (Nigeria)	Unit J/G Slot ADD Project Number 4500411078	½" - 8" 1500 Floating & Trunnion Ball Valves 2" - 8" 600 Lug Style Wafer Check Valves
· EXXON MOBIL (Nigeria)	Unit J Slot ADD Project Number 4500411012	½" - 8" 1500 Floating & Trunnion Ball Valves 2" - 8" 600 Lug Style Wafer Check Valves
· EXXON MOBIL (Nigeria)	Unit J Slot ADD Project Number 4500411012	½" - 8" 1500 Floating & Trunnion Ball Valves 2" - 8" 600 Lug Style Wafer Check Valves
· EXXON MOBIL (USA)	Texas	2" - 12" 300 - 600 Trunnion Ball Valves 2" - 12" 150 - 600 Gate and Globe Valves
· EXXON MOBIL (IRAQ)	West Qurna1	4" - 20" 600 - 900 Thru Conduit Gate Valves - Expanding
· Petronas (Malaysia)	Offshore Platform Isolation Valves	3" - 16" 150#, 24" 900# Metal-to-Metal Seated Trunnion Ball Valves
· SHELL (USA)	PINEDALE	2" - 16" 600 Gate Valves
· SHELL (USA)	Josh Kimmel	16" 300 Thru Conduit Gate Valves - Expanding Gas Tested
· SHELL (USA)	David Dauterive	2" - 150 316 Ball Valves 2" - 10" 600 Swing Check Valves 2" - 6" 600 Gate Valves 2" - 3" 600 Globe Valves
· SHELL (USA)	Dan Rolstad	8" 600 Thru Conduit Gate Valves - Expanding
· Spectra Energy (USA)	Bobcat Storage Expansion	2" - 24" 1500 Trunnion Ball Valves w/DPE Seats

Complete Product Line

Call SCV Valve today @ (281) 482-4728 for all your valve needs or visit us on the web @ www.scvvalve.com.

THRU CONDUIT GATES - SLAB & EXPANDING

Design: API 6D

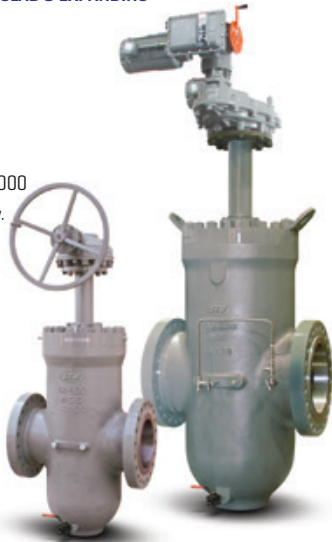
Sizes: 2" - 42"
Class: 150 - 1500

Standard stock.

Design: API 6A

Sizes: 9", 11" & 13-5/8"
Pressure: 2000, 3000, 5000

Limited inventory availability.
All sizes and pressure classes made to order.



PISTON CHECKS

Design: API 6D

Sizes: 2" - 24"
Class: 150 - 2500

Standard stock.



GLOBES

Design: API 623

Sizes: 2" - 24"
Class: 150 - 2500

Limited inventory availability.
All sizes and pressure classes made to order.



3-PIECE TRUNNION BALLS

Design: API 6D

Sizes: 2" - 42"
Class: 150 - 2500

Standard stock.

Design: API 6A

Sizes: 2-1/16" - 7-1/6"
Pressure: 2000, 3000, 5000

Limited inventory availability.
All sizes and pressure classes made to order.

Bore Coating: Scotchkote™ 134



FULL PORT SWING CHECKS

Design: API 6D

Sizes: 2" - 36"
Class: 150 - 2500

Standard stock.



Exterior Coating: Epoxy

WEDGE GATES

Design: API 600

Sizes: 2" - 48"
Class: 150 - 2500

Limited inventory availability. All sizes and pressure classes made to order.



FLOATING BALL VALVES

Design: B16.34

Sizes: 1/2" - 12"
Class: 150 - 1500

Standard stock.

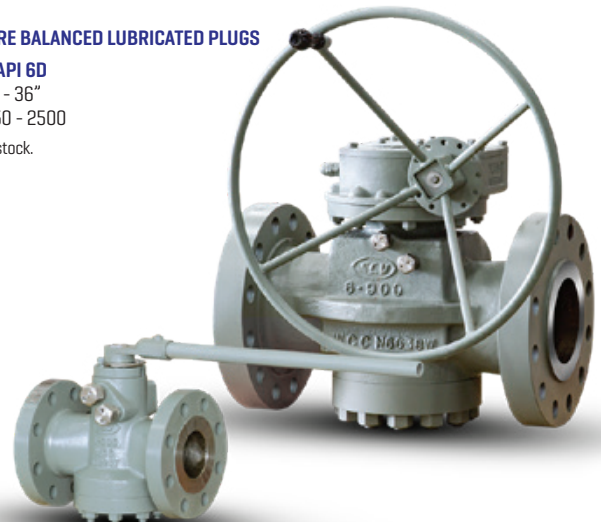


PRESSURE BALANCED LUBRICATED PLUGS

Design: API 6D

Sizes: 2" - 36"
Class: 150 - 2500

Standard stock.





**SALES, PROJECTS, ENGINEERING,
MANUFACTURING & WAREHOUSING**
3521 FM 646 RD. North
Santa Fe, TX 77510
Phone: [281] 482-4728
www.scvvalve.com

Dear client,

Over past several decades, SCV Valve has become one of the most well-respected and trusted brands in the marketplace built on a foundation of consistent performance with an unwavering commitment to quality.

SCV Valve takes sincere pride in our ability to manufacture both commodity and specialty valves with timely delivery capabilities and competitive prices. Industries served include the power, paper and pulp, oil and gas, and petro-chemical sectors. All sizes, pressure classes, and metallurgical compositions are managed in house utilizing the strictest quality control measures to ensure the customer's total satisfaction.

SCV Valve products include thru conduit gates, wedge gates, globes, full port swing checks, piston checks, trunnion mounted balls, floating balls, and lubricated plugs. Valves utilized throughout the industry must meet rigorous quality and production standards. SCV Valve has earned its API 6A, API 6D, ISO: 9001, CE-PED, and CRN certifications while operating under the API Q1 Quality Management System.

Call SCV Valve today at [281]482-4728 for all your valve needs or visit us on the web @ www.scvvalve.com.

On behalf of all of the members at SCV Valve, we thank you for the opportunity to earn your business.

Sincerely,

A handwritten signature in blue ink, appearing to read "Sid McCarra", is written over a light blue horizontal line.

Sid McCarra
President
SCV Valve, LLC

Contact Information

SANTA FE, TEXAS

Sales, Projects, Engineering, Manufacturing, & Warehousing

3521 FM 646 Rd. North

Santa Fe, TX 77510

Phone: (281) 482-4728

Fax: (281) 482-9728

www.scvvalve.com

Since 1972, the SCV brand has been committed to providing quality flow control products to the Power, Paper & Pulp, Oil & Gas, and Petro Chemical industries.

As one of the largest valve manufacturers, SCV Valve's reputation is unparalleled for producing high quality commodity and specialty valves. Products range in sizes 1/2" - 48", in pressure classes from 150# - 2500# and are backed by timely deliveries and competitive prices.

Call SCV today at (281)482-4728 for all your valve needs or visit us on the web @ www.scvvalve.com.

Cast Wedge Gates & Globes · Pressure Seal Gates, Globes & Checks · Slab & Expanding Thru Conduit Gates · Piston, Swing, & Full Port Checks · Wafer & Lug Design Dual Plate Checks · Pressure Balanced Lubricated Plugs · Floating & Trunnion Balls

