

# Gate Valves

Forged Steel

Sizes 3/8" - 2"

Class 800 - 2500



## Design and Manufacturing Standards

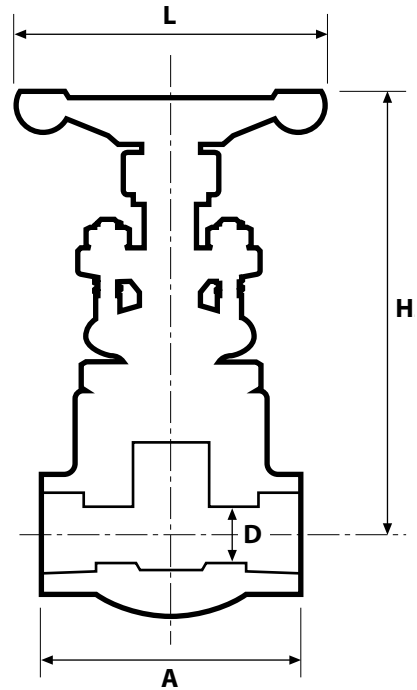
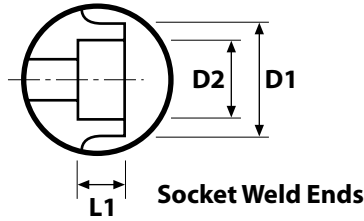
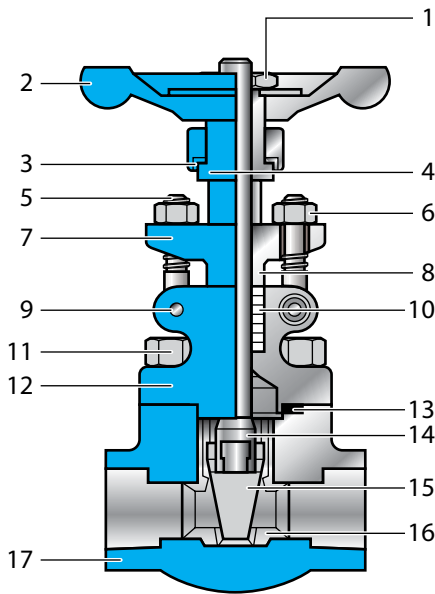
<b>Basic Design</b>	<b>API 602 &amp; ANSI B16.34</b>
<b>Socket Weld End Dimension</b>	<b>ANSI B16.11</b>
<b>Thread End Dimension</b>	<b>ANSI B1.20.1</b>
<b>Inspection &amp; Testing</b>	<b>API 598</b>



Forged Steel Gate Valves

Class 800

3/8" - 2"



BILL OF MATERIAL

NO	NAME OF PART	MATERIAL
1	LOCK NUT	CARBON STEEL AISI 1020
2	HANDWHEEL	MALLEABLE IRON
3	WASHER	ASTM A276 430
4	STEM NUT	ASTM A276 410
5	EYE BOLT	ASTM A276 410
6	EYE BOLT NUT	ASTM A194 2H
7	GLAND FLANGE	ASTM A216 WCB
8	PACKING GLAND	ASTM A276 410
9	EYE BOLT PIN	ASTM A276 410
10	PACKING	GRAPHITE
11	BOLT	ASTM A193 B7
12	BONNET	ASTM A105 - Also available in F5, F11, F304, F316, F51, F53, F347, and F321
13	GASKET	GRAPHITE
14	STEM	ASTM A276 410
15	WEDGE	ASTM A276 420
16	SEAT RING	ASTM A276 410+HF
17	BODY	ASTM A105 - Also available in F5, F11, F304, F316, F51, F53, F347, and F321

DIMENSIONS OF SOCKET WELD ENDS

VALVE SIZE	in	.375	.5	.75	1	1.25	1.5	2	VALVE SIZE	in	.375	.5	.75	1	1.25	1.5	2
	mm	10	13	19	25	32	38	51		mm	10	13	19	25	32	38	51
D	in	.39	.51	.71	.94	1.14	1.44	1.83	A	in	3.11	3.62	4.37	4.72	4.72	5.51	7.01
	mm	10	13	18	24	29	36.5	46.5		mm	79	92	111	120	120	140	178
D1	in	1.34	1.34	1.57	1.89	2.52	2.52	3.07	H2	in	6.22	6.46	7.64	8.70	9.61	11.10	12.99
	mm	34	34	40	48	64	64	78		mm	158	164	194	221	244	282	330
D2	in	.69	.86	1.07	1.33	1.68	1.92	2.41	L	in	3.94	3.94	4.92	6.30	6.30	7.09	7.87
	mm	17.6	21.8	27.1	33.8	42.6	48.7	61.1		mm	100	100	125	160	160	180	200
-	-	-	-	-	-	-	-	-	L1	in	.38	.38	.5	.5	.5	.5	.63
	-	-	-	-	-	-	-	-		mm	9.6	9.6	12.7	12.7	12.7	12.7	15.9